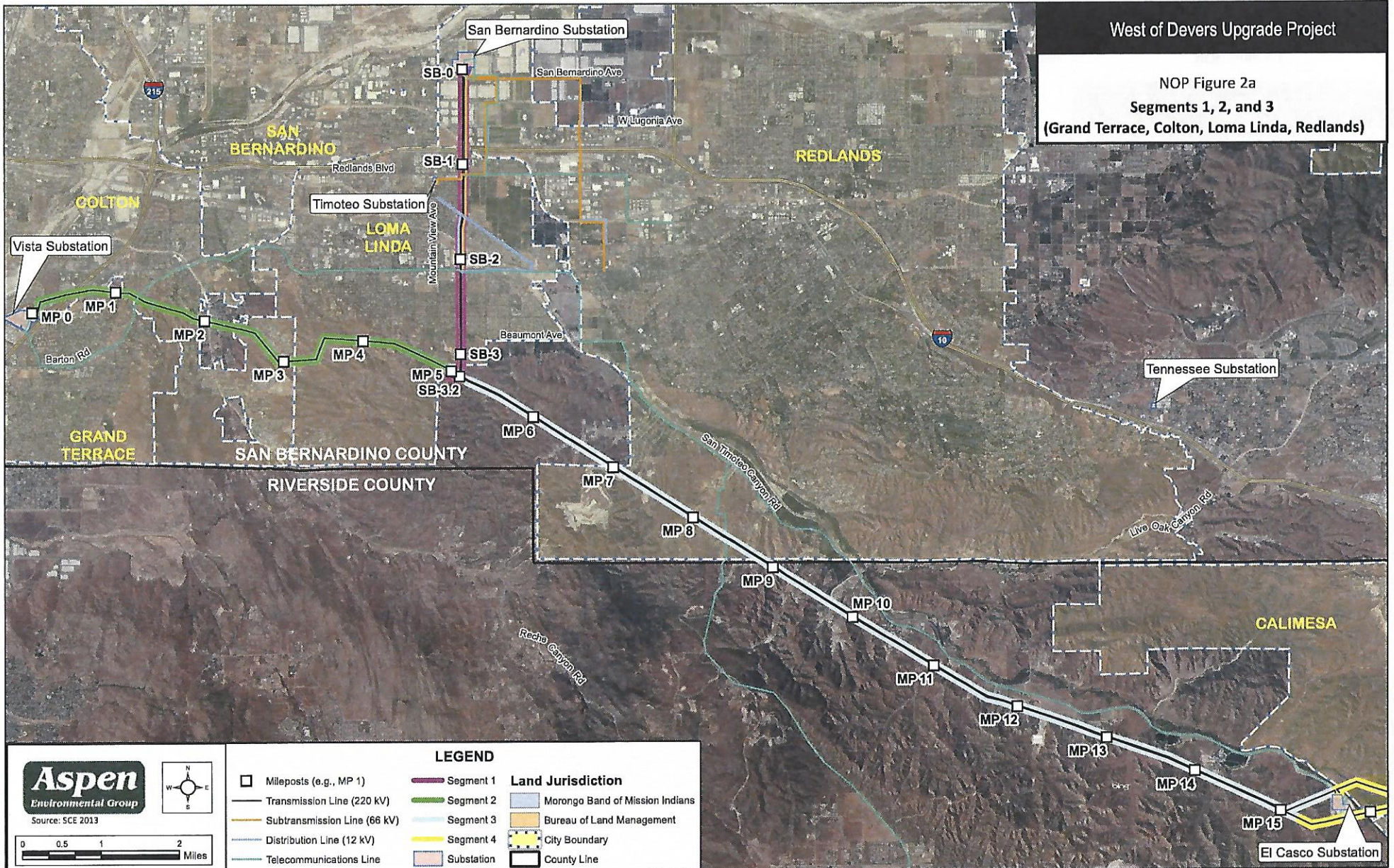


West of Devers Upgrade Project

NOP Figure 2a
 Segments 1, 2, and 3
 (Grand Terrace, Colton, Loma Linda, Redlands)



LEGEND

- | | | |
|------------------------------|------------|---------------------------------|
| Mileposts (e.g., MP 1) | Segment 1 | Land Jurisdiction |
| Transmission Line (220 kV) | Segment 2 | Morongo Band of Mission Indians |
| Subtransmission Line (66 kV) | Segment 3 | Bureau of Land Management |
| Distribution Line (12 kV) | Segment 4 | City Boundary |
| Telecommunications Line | Substation | County Line |

Aspen
 Environmental Group

Source: SCE 2013

